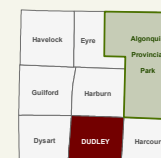
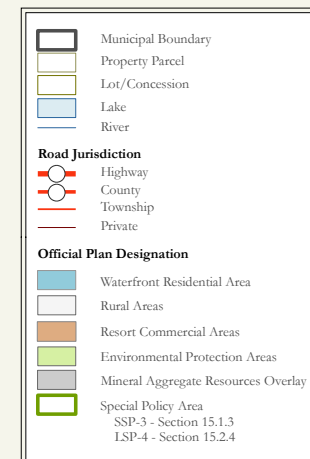


Municipality of Dysart et al

DUDLEY TOWNSHIP

SCHEDULE "A" MAP 5



SCALE: 1 : 55,000



REVISED: November, 2017

Designed and produced by the Corporation of the United Townships of Dysart et al.
Copyright by the Corporation of the United Townships of Dysart et al,
Haliburton, Ontario, 2017.

DISCLAIMER:

This map is for planning reference purposes only and is not a survey of properties. No representation is made or warranty given as to its content. User assumes all risk of use. The Municipality of Dysart et al assumes no responsibility for any loss resulting from such use. This publication may not be reproduced in any form, in part or in whole, without written permission.

BASE DATA SOURCE:

QUEEN'S PRINTER OF ONTARIO, Ministry of Natural Resources and Forestry (MNRF), the County of Haliburton, the Municipal Property Assessment Corporation (MPAC). Use of this data does not constitute an endorsement by the MNRF, Ontario Government, County of Haliburton or MPAC.

Parcel #1 6,349 ac

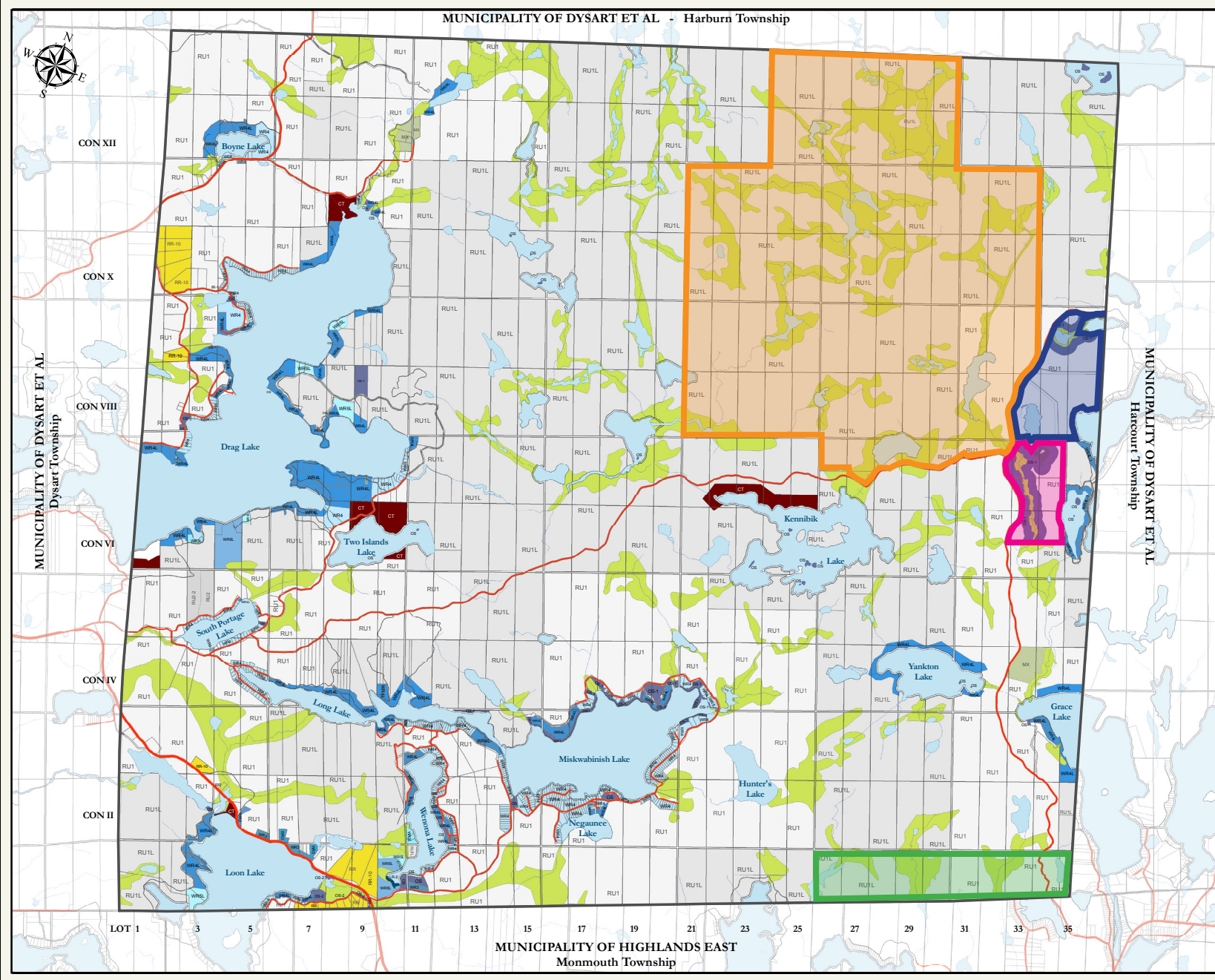
Parcel #2 411 ac

Parcel #3 295 ac

Parcel #4 672 ac

Parcel #5 683 ac

**AVISON
YOUNG**



Municipality of Dysart et al

DUDLEY TOWNSHIP

SCHEDULE "A" MAP 6

LEGEND

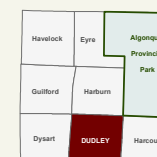
ROAD JURISDICTION

- Highway
- County
- Township
- Private

ZONES

- EP - Environmental Protection
- LR - Lake or River
- OS - Open Space
- RU1 - Rural Type 1
- RU1L - Rural Type 1L
- RR - Rural Residential
- WR2 - Waterfront Residential Type 2
- WR3 - Waterfront Residential Type 3
- WR3L - Waterfront Residential Type 3L
- WR4 - Waterfront Residential Type 4
- WR4L - Waterfront Residential Type 4L
- WR5 - Waterfront Residential Type 5
- WR5L - Waterfront Residential Type 5L
- IR - Rural Institutional
- MX - Extractive Industrial
- CT - Tourist Commercial

SCALE



REVISED: April, 2017

Designed and produced by the Corporation of the United Townships of Dysart et al.
Copyright by the Corporation of the United Townships of Dysart et al,
Haliburton, Ontario, 2017.

DISCLAIMER:

This map is for planning reference purposes only and is not a survey of properties. No representation is made or warranty given as to its content. User assumes all risk of use. The Municipality of Dysart et al assumes no responsibility for any loss resulting from such use. This publication may not be reproduced in any form, in part or in whole, without written permission.

BASE DATA SOURCE:

QUEEN'S PRINTER OF ONTARIO, Ministry of Natural Resources and Forestry (MNRF), the County of Haliburton, the Municipal Property Assessment Corporation (MPAC). Use of this data does not constitute an endorsement by the MNRF, Ontario Government, County of Haliburton or MPAC.

Parcel #1 6,349 ac

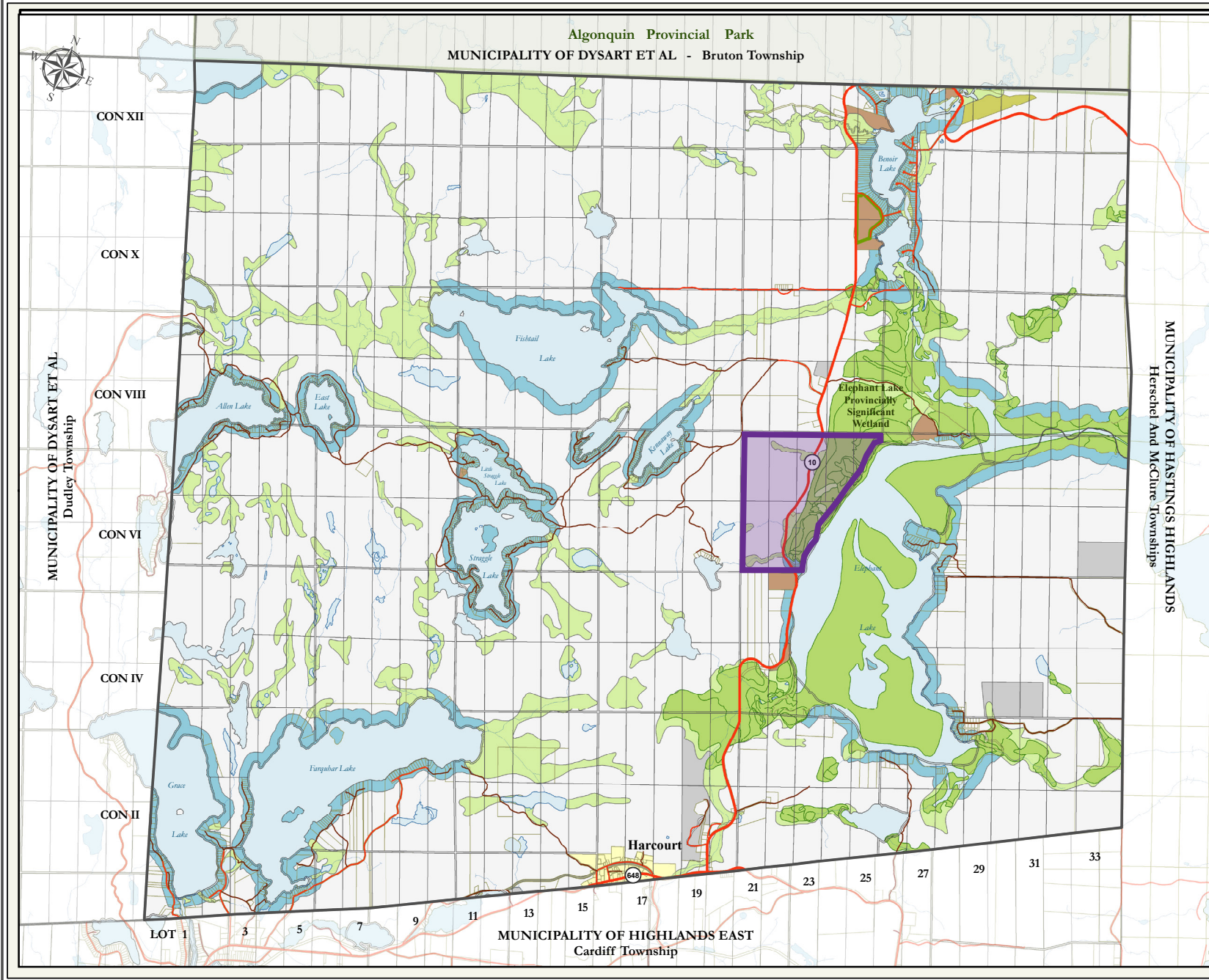
Parcel #3 295 ac

Parcel #5 683 ac

Parcel #2 411 ac

Parcel #4 672 ac

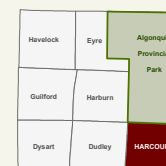
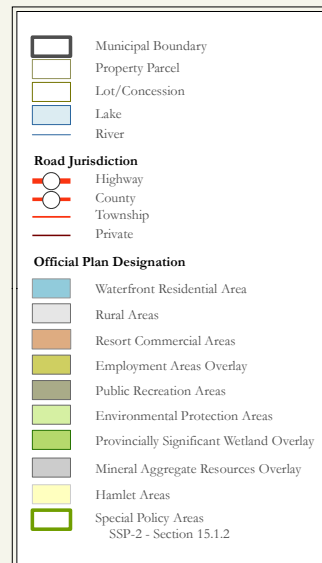
**AVISON
YOUNG**



Municipality of Dysart et al

HARCOURT TOWNSHIP

SCHEDULE "A" MAP 7



SCALE: 1 : 52,000



REVISED: March, 2018

Designed and produced by the Corporation of the United Townships of Dysart et al. Copyright by the Corporation of the United Townships of Dysart et al, Haliburton, Ontario, 2017.

DISCLAIMER:

This map is for planning reference purposes only and is not a survey of properties. No representation is made or warranty given as to its content. User assumes all risk of use. The Municipality of Dysart et al assumes no responsibility for any loss resulting from such use. This publication may not be reproduced in any form, in part or in whole, without written permission.

BASE DATA SOURCE:

QUEEN'S PRINTER OF ONTARIO, Ministry of Natural Resources and Forestry (MNRF), the County of Haliburton, the Municipal Property Assessment Corporation (MPAC). Use of this data does not constitute an endorsement by the MNRF, Ontario Government, County of Haliburton or MPAC.

Parcel #1 6,349 ac

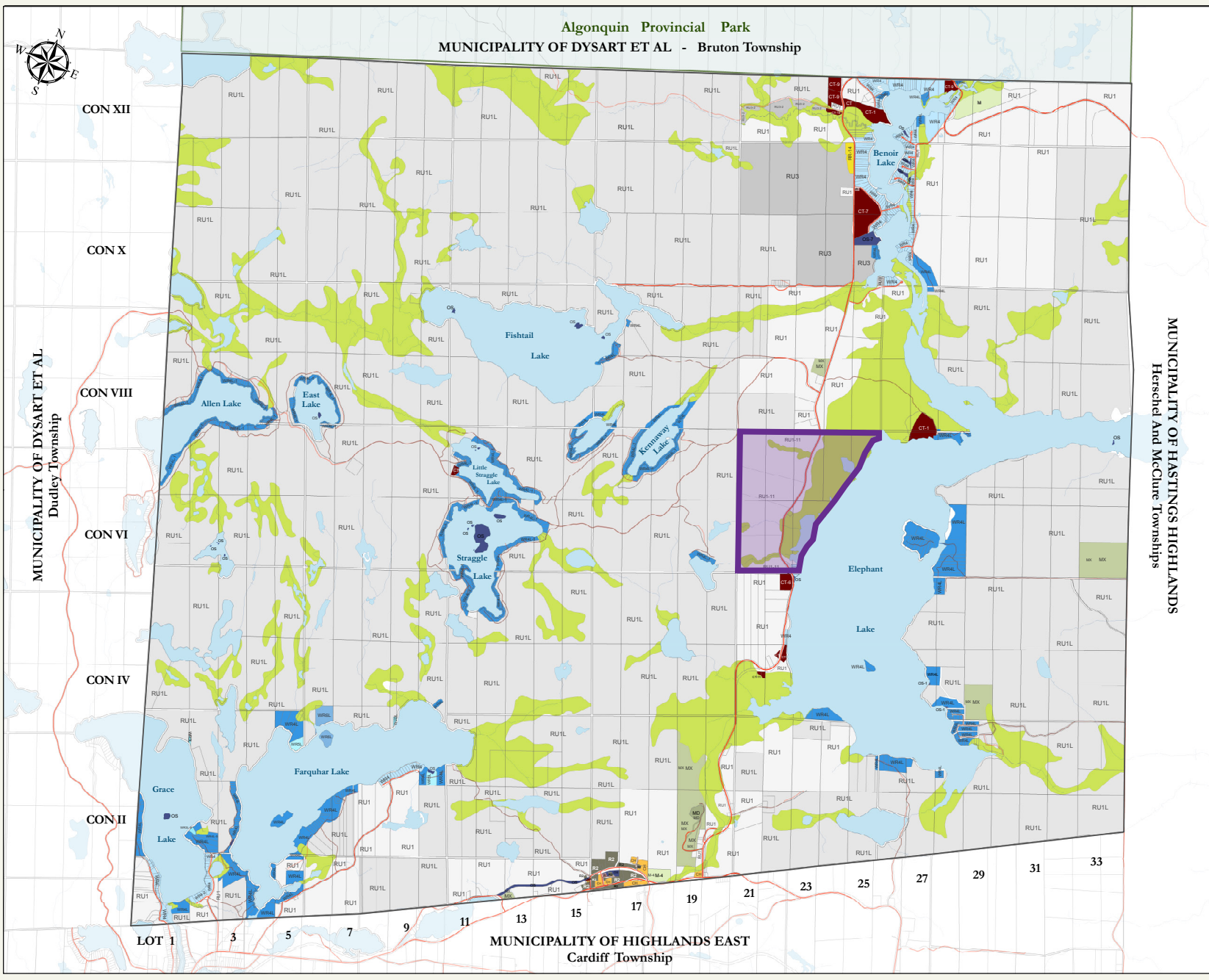
Parcel #2 411 ac

Parcel #3 295 ac

Parcel #4 672 ac

Parcel #5 683 ac

**AVISON
YOUNG**



Parcel #1 6,349 ac

Parcel #2 411 ac

Parcel #3 295 ac

Parcel #4 672 ac

Parcel #5 683 ac

**AVISON
YOUNG**

REVISED: November, 2017

Designed and produced by the Corporation of the United Townships of Dysart et al.
Copyright by the Corporation of the United Townships of Dysart et al,
Haliburton, Ontario, 2017.

DISCLAIMER:

This map is for planning reference purposes only and is not a survey of properties. No representation is made or warranty given as to its content. User assumes all risk of use. The Municipality of Dysart et al assumes no responsibility for any loss resulting from such use. This publication may not be reproduced in any form, in part or in whole, without written permission.

BASE DATA SOURCE:

QUEEN'S PRINTER OF ONTARIO, Ministry of Natural Resources and Forestry (MNR), the County of Haliburton, the Municipal Property Assessment Corporation (MPAC). Use of this data does not constitute an endorsement by the MNR, Ontario Government, County of Haliburton or MPAC.